

Building a Gold Camp in Atlantic Canada

Puma Exploration is a Canadian company engaged in the acquisition, assessment, exploration and development of gold mineral properties. Puma has 100% ownership of more than 70,000 ha of easily accessible prime land in Canada's newest gold district in Northern New Brunswick, Canada.

TSXV : PUMA
OTCQB : PUMXF

Highlights

Large Underexplored Gold Asset

- >49,000 ha in a prime mining jurisdiction
- Excellent access: paved road, airport, rail and seaport
- High-grade gold near-surface — free gold in quartz veins
- 5 separate gold zones discovered, kilometres apart
- Positive preliminary metallurgical tests - 92% gold recovery with gravity alone
- Only C\$12.5M of expenditure to date

Experienced Team & Supportive Stakeholders

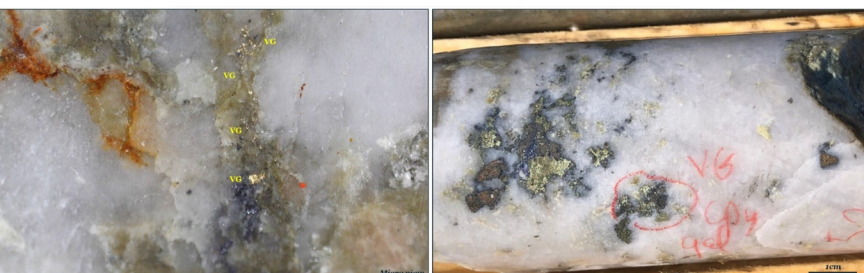
- Management expertise
- Solid technical team with involvement from industry experts (Geominex, Mira Geoscience, Windfall Geotek)
- Major shareholders include Crescat Capital

Well Positioned for Further Development

- Funds to be mainly allocated to the development of the Williams Brook Gold Project, which holds significant exploration potential.

Upcoming Catalysts

- Regular news flow from ongoing work programs.
- Results from expanded metallurgical test.
- Tiger Gold Zone: launch of inaugural drilling program.
- Step-out drilling to the NE to connect Tiger to Lynx along 1.5 km extension.
- Jaguar and Cougar Gold Zones: results of expanded surface work.
- 10,000 m drilling program at Lynx in 2024.
- 4,000 T bulk sample program at Lynx in 2024.



Corporate

CAPITAL STRUCTURE

Shares Outstanding	147,648,838
Warrants (@\$0.21 wt. av.)	20,183,930
Options (@\$0.21 wt. av.)	12,110,000
Cash & cash equivalents	~C\$2M
Market Cap	C\$17M
Share Price (Jan. 11, 2024)	C\$0.115

MAJOR SHAREHOLDERS

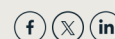
Institutional/Funds	4%
HNW Investors	24%
Board & Management	9%

BOARD & MANAGEMENT TEAM

Marcel Robillard	President & CEO
Laura Araneda	Director
Jacques Dion	Director
Michel Fontaine	Director
Réjean Gosselin	Director
Richard Thibault	Director

Puma Exploration 175, rue Legaré, Rimouski, Quebec G5L 3B9
418-724-0901 mboiridy@explorationpuma.com

explorationpuma.com



Williams Brook Gold Project

Emerging Gold Camp

5 claims blocks located near the Rocky Brook Millstream Fault ("RBMF"), a major regional structure formed during the Appalachian Orogeny and a significant control for gold deposition in the region.

Lynx Gold Zone

Main Area of Focus:

- Shallow orogenic (or epizonal) Fosterville-style gold deposit.
- Gold trend extends over 4 km along strike.
- Free gold in quartz veins with associated sulphides.
- Bonanza-grade gold shoots across 100 m-wide corridor. Potential for km scale depth extent.
- Gold enrichment confirmed over a strike length of 750 m, a width of 100 m, and a depth of 175 m.
- High-grade gold shoots surrounded by lower-grade gold envelope.
- Impressive lateral and depth continuity of gold mineralization starting at surface.
- Model of multiple stacked veins.
- High-grade gold shoots extend downhole to at least 250 m and over a strike length of at least 400 m.
- 2023 drilling expanded the known mineralization at depth and opened another area of gold mineralization.
- Only 15,800 m drilled since 2021

